

## Benefits

- Reduce travel time
- Remove around 700 heavy vehicles from the town centre, the majority of which are B-doubles
- Improve motorist and pedestrian safety
- Improve traffic flow in Coonabarabran, particularly east-west travel
- Improve the amenity of the retail district for shoppers, residents and workers
- Reduce heavy vehicle noise and stock-created odour
- Remove conflicts between local traffic and heavy vehicles in the CBD.



Neilson Park, Coonabarabran

## Display locations

The REF and concept design will be on display from **30 November 2020 to 29 January 2021** at the following:

- Warrumbungle Shire Council  
14-22 John Street  
Coonabarabran NSW 2357
- Macquarie Regional Library  
John Street  
Coonabarabran NSW 2357

## Online community session

The community is invited to attend an online information session to be held via Facebook on **December 15 at 5.30pm**.

Visit [nswroads.work/coonabarabran](https://nswroads.work/coonabarabran) to register or call **1800 741 636** for more information.

## What happens next?

Feedback on the REF and design will be considered and a submission report summarising the comments made will be made available when the REF is finalised.

We will keep the community updated as the project progresses.

## Have your say

Please provide feedback on the REF by **29 January 2021**, by sending your comments to:

☎ 1800 741 636

@ [newell.upgrade@transport.nsw.gov.au](mailto:newell.upgrade@transport.nsw.gov.au)

✉ PO Box 36, Dubbo NSW 2830



Translating and Interpreting Service on 131 450 and ask them to call the project team on 1800 741 636. The interpreter will then assist you with translation.



Transport for NSW

# Newell Highway upgrade at Coonabarabran

Review of Environmental Factors and Concept Display  
November 2020



Current Newell Highway through Coonabarabran

## Background

The NSW Government is planning for an upgrade of the Newell Highway at Coonabarabran. The proposed upgrade includes building a new eight kilometre long upgrade three kilometres to the east of town. The upgrade would reduce travel time and increase safety for road users and pedestrians by removing trucks from local streets as well as reducing noise and air pollution in town.

Key features of the proposal include:

- Construction of an 8km upgrade to the east of town
- Upgrade of the Newell Highway and Oxley Highway intersection
- A new bridge over the Castlereagh River.

## Review of Environmental Factors

Transport for NSW has prepared a Review of Environmental Factors (REF) to determine the environmental and social impacts of the Coonabarabran upgrade. The REF is now on display for public information and comment.

The REF explains the methods that would be used to mitigate and manage likely impacts of the upgrade.

You are invited to give feedback on the REF by **29 January 2021**.

November 2020  
20.372

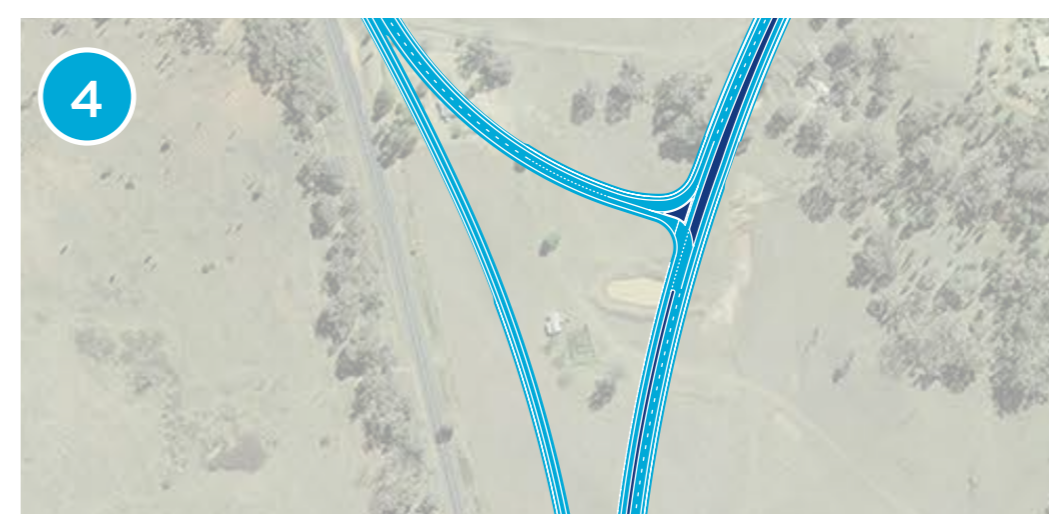
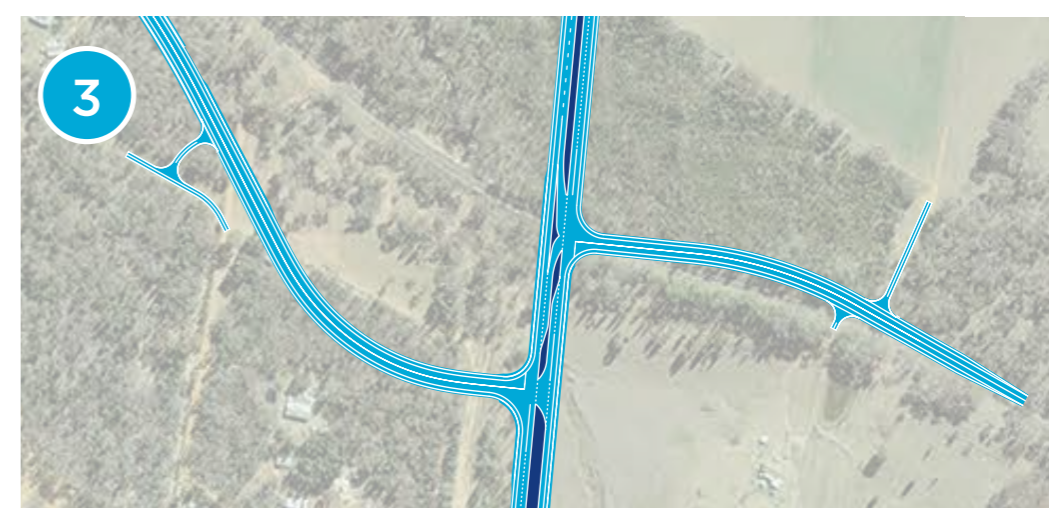
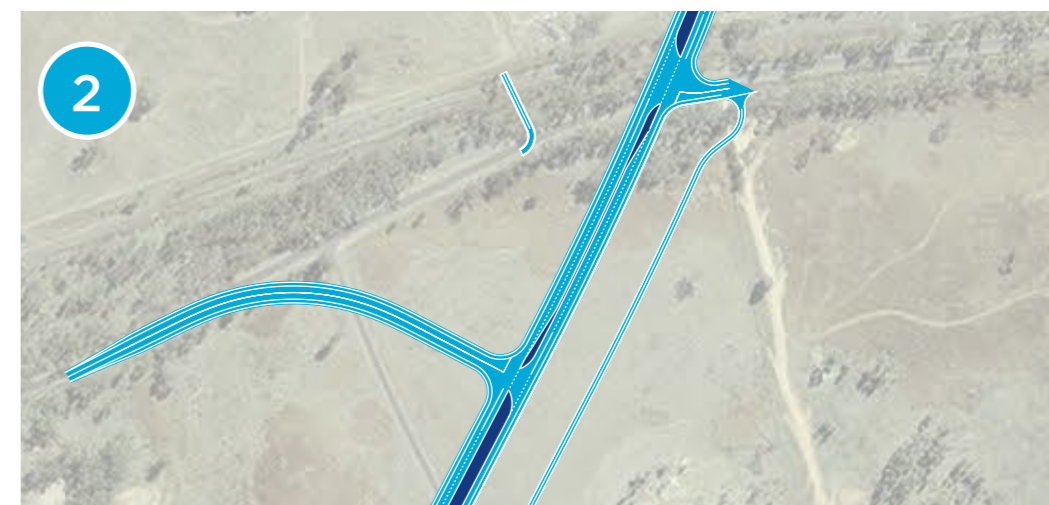
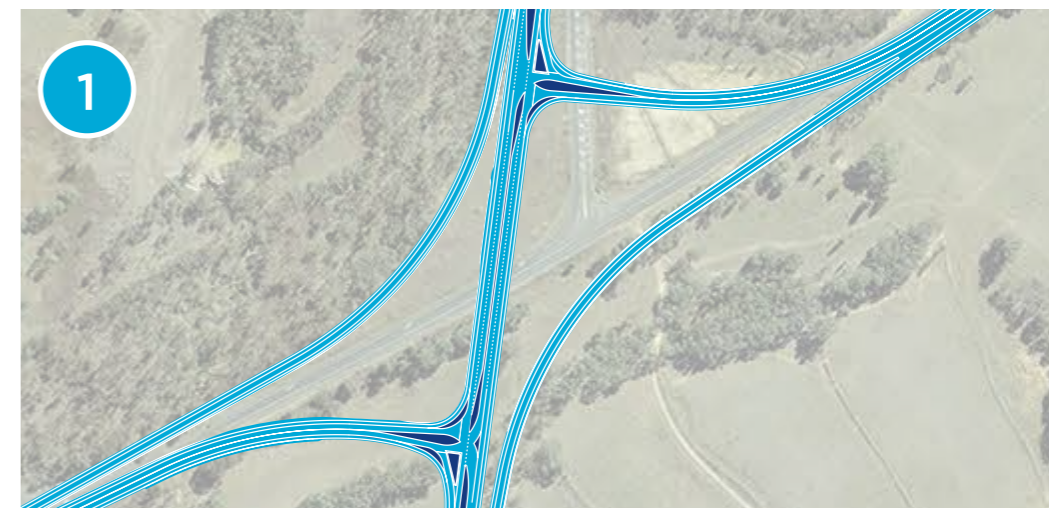
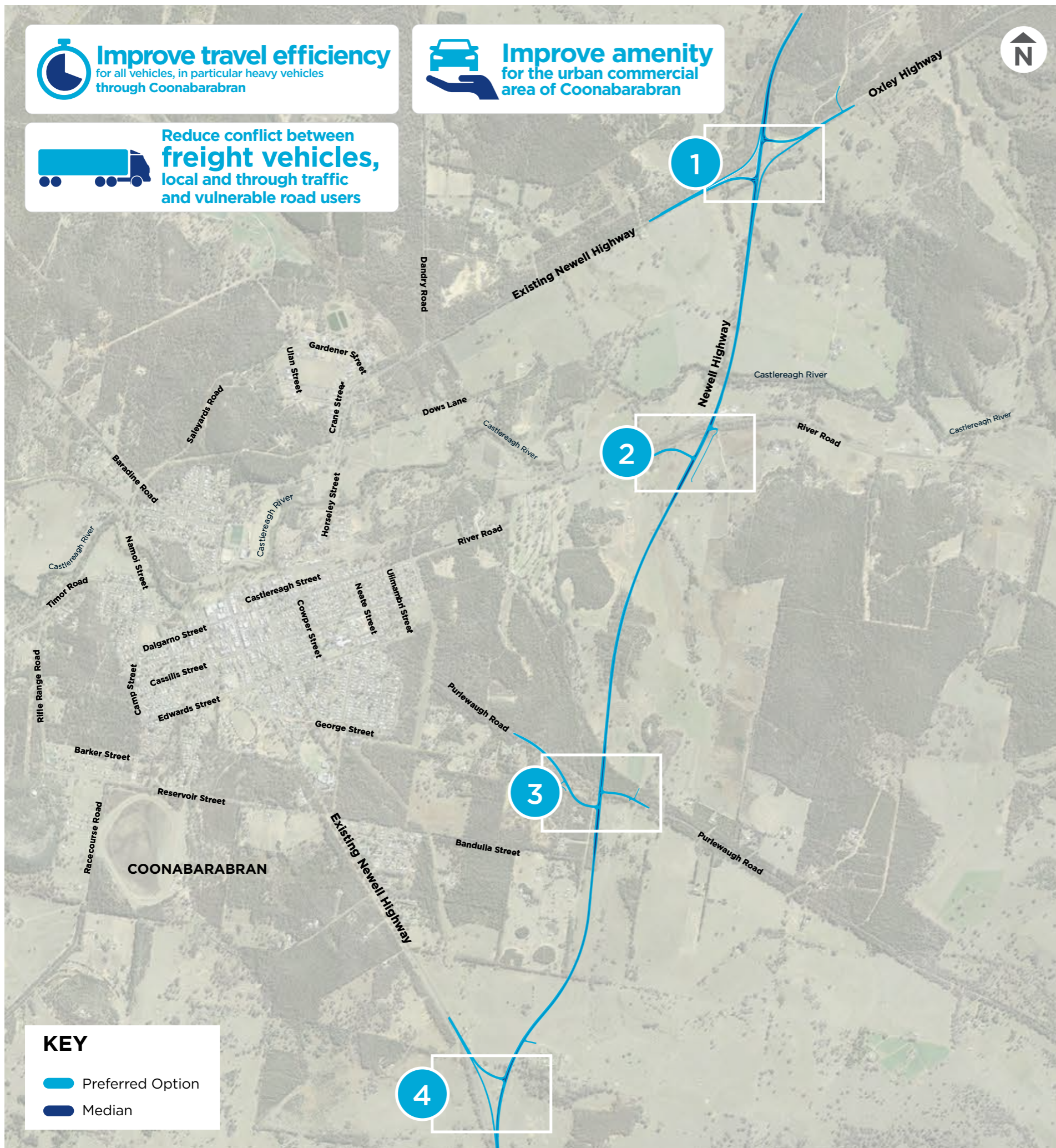




Privacy Transport for NSW ("TFNSW") is subject to the Privacy and Personal Information Protection Act 1998 ("PPIP Act") which requires that we comply with the Information Privacy Principles set out in the PPIP Act. All information in correspondence is collected for the sole purpose of assisting in the delivery of this project. The information received, including names and addresses of respondents, may be published in subsequent documents unless a clear indication is given in the correspondence that all or part of that information is not to be published. Otherwise Transport for NSW will only disclose your personal information, without your consent, if authorised by the law. Your personal information will be held by Transport for NSW at 27 Argyle Street, Parramatta. You have the right to access and correct the information if you believe that it is incorrect.

**Improve travel efficiency**  
for all vehicles, in particular heavy vehicles  
through Coonabarabran

**Improve amenity**  
for the urban commercial  
area of Coonabarabran

**Reduce conflict between freight vehicles,**  
local and through traffic  
and vulnerable road users



**KEY**  
 Preferred Option  
 Median